

LOVESHAW

LDXRTB Side Rail Mount Replacement Upgrade (.SRM-LDXRTB)

Always wear proper Personal Protective Equipment including PPE required by your facilities

Tools Required for Installation (provided by Customer):

Ratchet w/M10 Sockets

– one deep, one standard or

- *Air ratchet may be used in place of one manual ratchet or*

- M10 crescent wrench

(1) M5 Allen Key



Parts (provided by Loveshaw):

(2) LDX-0049B-4

(2) M6 SHCS x 35

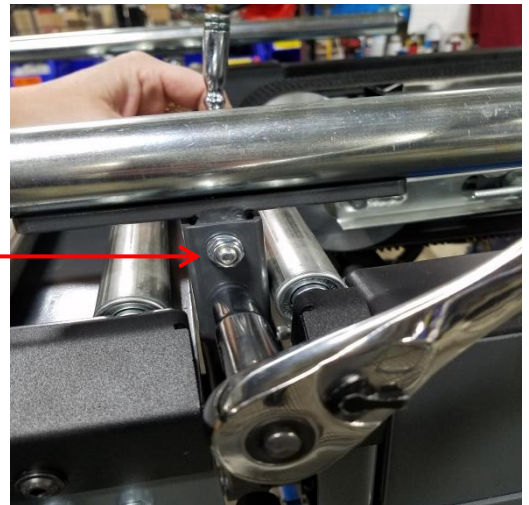
(2) M6 Nylock Nuts

(2) M6 Flat Washers

(4) M6 Star Washers

Step 1:

Using ratchet(s), remove each screw from mount; remove a total of 2 screws. (Note, mount is threaded all the way through)



Step 2:

Remove side rail tube and mount from side rail arm.

Step 3:

Using M5 Allen Key, remove screws from side rail tube.



LOVESHAW

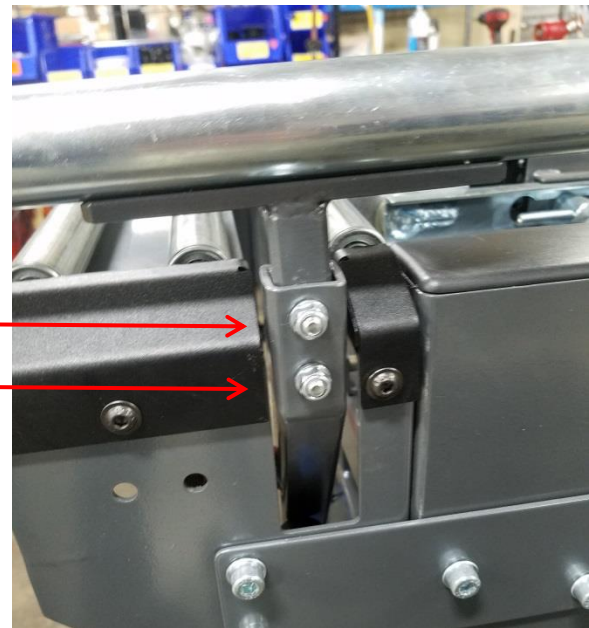
Step 4:

Attach new side rail mount (LDX-0049B-4) as shown.
(Recommend using Loctite Threadlocker 345; not included with parts provided by Loveshaw)



Step 5:

Reinsert new side rail mount and tube into side rail arm and reattach using new hardware.



For questions contact: Loveshaw Service Department @ 800-572-3434, Monday thru Friday, 8:30 am to 5 pm., or contact your local distributor.